

SENSOR TIP OPTIONS

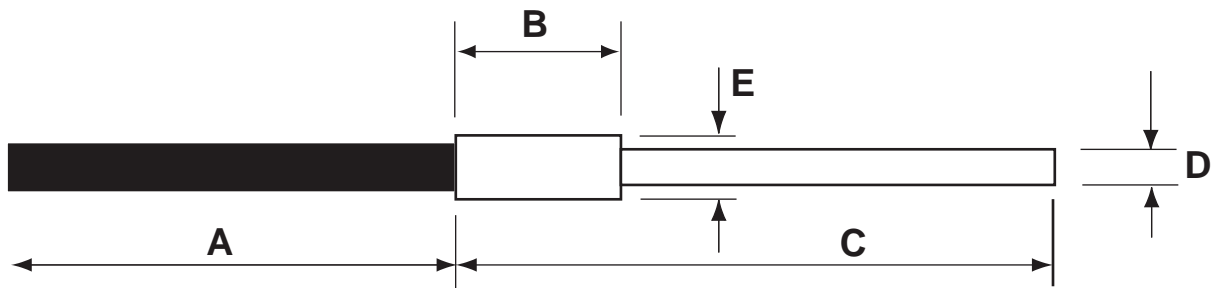
Custom Tips To Customer Specifications

For straight tips, specify **Options T1 thru T3** to designate custom requirements.

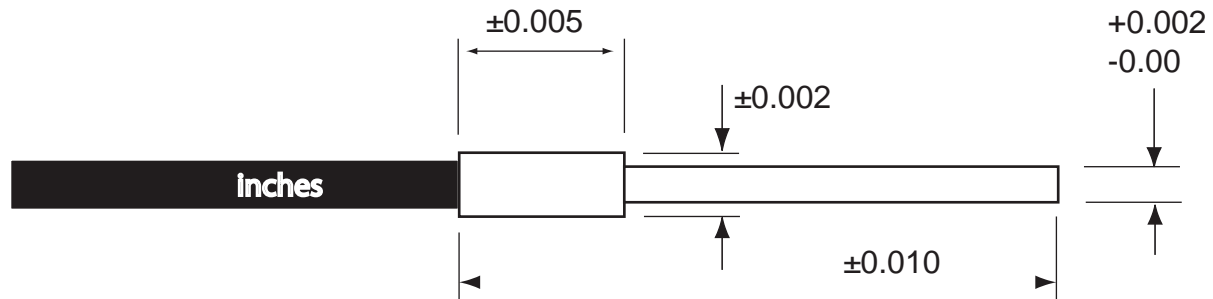
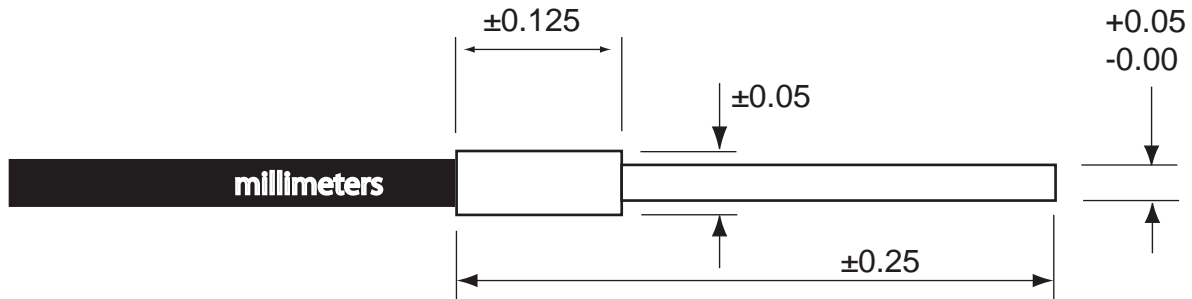
■ Option T1 - Simple Straight Tip



Use **T1** to designate a customized straight tip. Provide the dimensions shown here.



STANDARD TOLERANCES for SENSOR TIPS



SENSOR TIP OPTIONS

Custom Tips To Customer Specifications

■ Option T2 - Straight Tip, Threaded



Use **T2** to designate a straight threaded tip. Specify size and length of thread.

■ Option T3 - Straight Tip, non-metallic



Use **T3** to designate a straight tip with non-metallic construction. Factory contact is required to confirm dimensions.

MINIMUM THREAD SIZES FOR METALLIC SENSOR TIPS		
MODEL	UNIFIED THREAD SIZES	METRIC THREAD SIZES
D6	6-32 UNC	M3 x 0.5
D20	6-32 UNC	M3 x 0.5
D21	6-32 UNC	M3 x 0.5
D63	8 - 32 UNC	M3 x 0.5
D64	8 - 32 UNC	M3 x 0.5
D100	10 - 32 UNC	M5 x 0.8
D125	1/4 - 28 UNF	M6 x 1
D169	5/16 - 24 UNF	M8 x 1.25
D170	5/16 - 24 UNF	M8 x 1.25
D171	5/16 - 24 UNF	M8 x 1.25
RC12	10-32 UNF	M5 x 0.8
RC20	10-32 UNF	M5 x 0.8
RC21	10-32 UNF	M5 x 0.8
RC25	1/4 - 28	M6 x 1
RC60	1/4 - 28	M6 x 1
RC62	5/16 - 24	M8 x 1.25
RC63	5/16 - 24	M8 x 1.25
RC90	3/8 - 24	M10 x 1.5
RC100	8 - 32 UNC	M5 x 0.8
RC140	7/16 - 32 UN	M12 x 1.5
RC171	5/16 - 24 UNF	M8 x 1
RC190	7/16 - 32 UN	M12 x 1.5

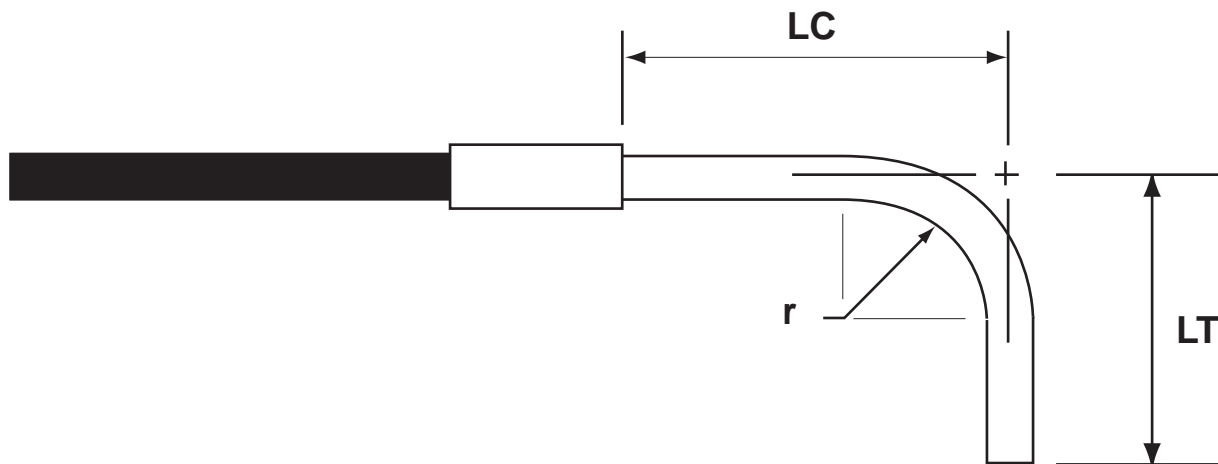
SENSOR TIP OPTIONS

Custom Tips To Customer Specifications

For right angled tips, specify **Options T4 thru T6** to designate custom requirements.

■ Option T4 - Right Angle Tip

Use **T4** to designate a right angle tip with SS tubing bent into a 90° turn. Specify leg lengths and (if desired) the bend radius.



MINIMUM BEND RADIUS

The safe minimum radius for a given diameter tubing depends upon the thickness of the tubing wall, the quantity of fiberoptics filling the tube space, and the method of bending. Generally, it is good practice to design a part with the minimum centerline bend radius of 3.5 times the probe diameter. Exceptions to this rule are probes with 3/16" diameter tube or larger which require 5 times the tube diameter.

In special instances, it may be possible to make probes with tighter bend radii than stated in the above general guideline. Please contact the factory in these cases.

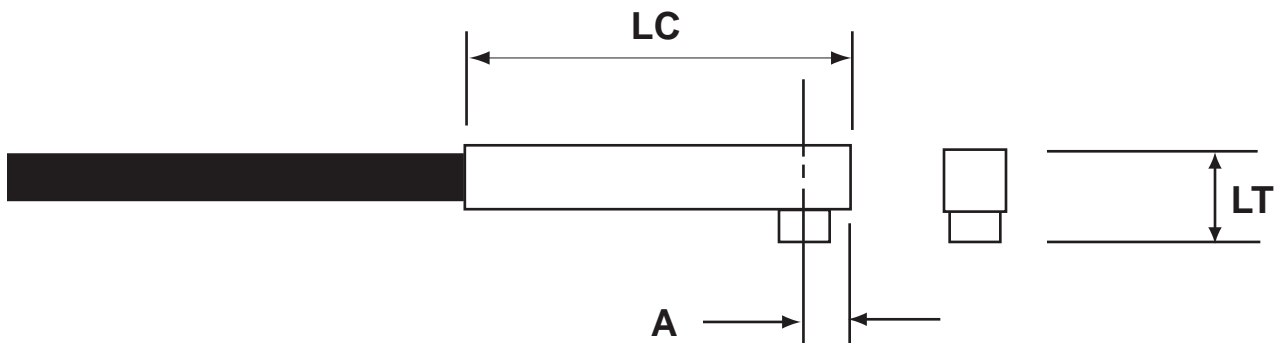
SENSOR TIP OPTIONS

Custom Tips To Customer Specifications

■ Option T5 - Right Angle Tip



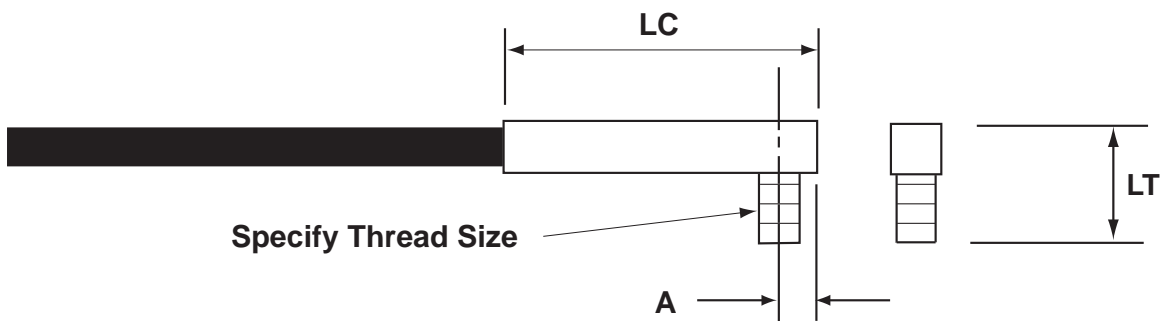
Use **T5** to designate a right angle tip with square body construction having a short sensor tip section mounted at 90°. This design turns 90° in the shortest space possible. Specify dimensions shown.



■ Option T6 - Right Angle Tip



Use **T6** to designate a right angle tip with square body construction having a threaded sensor tip section mounted at 90°. Specify thread size and length.



SENSOR TIP OPTIONS

Custom Tips To Customer Specifications

- **Option T7- Custom Tip**

Use **T7** to designate a unique shape tip made to customer's original drawing.

- **Option T8- 350°C High Temperature Tip**

Use **T8** to designate a 350°C high temperature requirement. Standard tips are rated for 200°C continuous duty. By utilizing a high temperature epoxy and cure, tips with standard construction are rated for continuous exposure to 350°C.

- **Option T9- 482°C High Temperature Tip**

Use **T9** to designate a 482°C high temperature requirement. T9 probes are specially constructed with polyimide adhesive to survive continuous duty at 482°C.