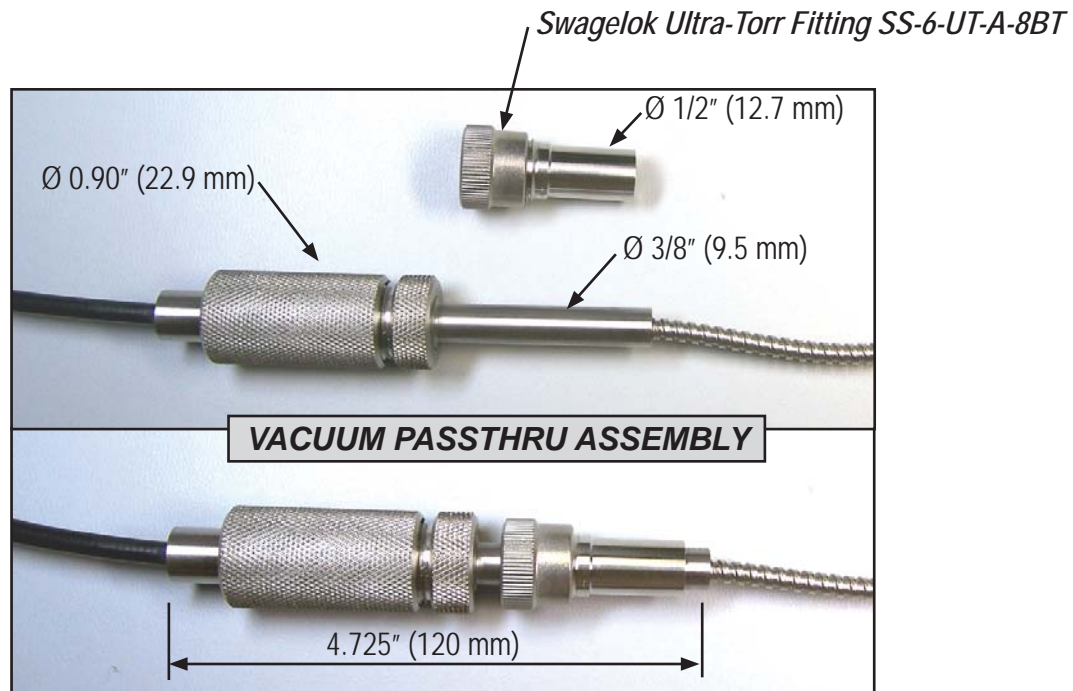


Single Channel Vacuum Passthru



model Bv1

FEATURES

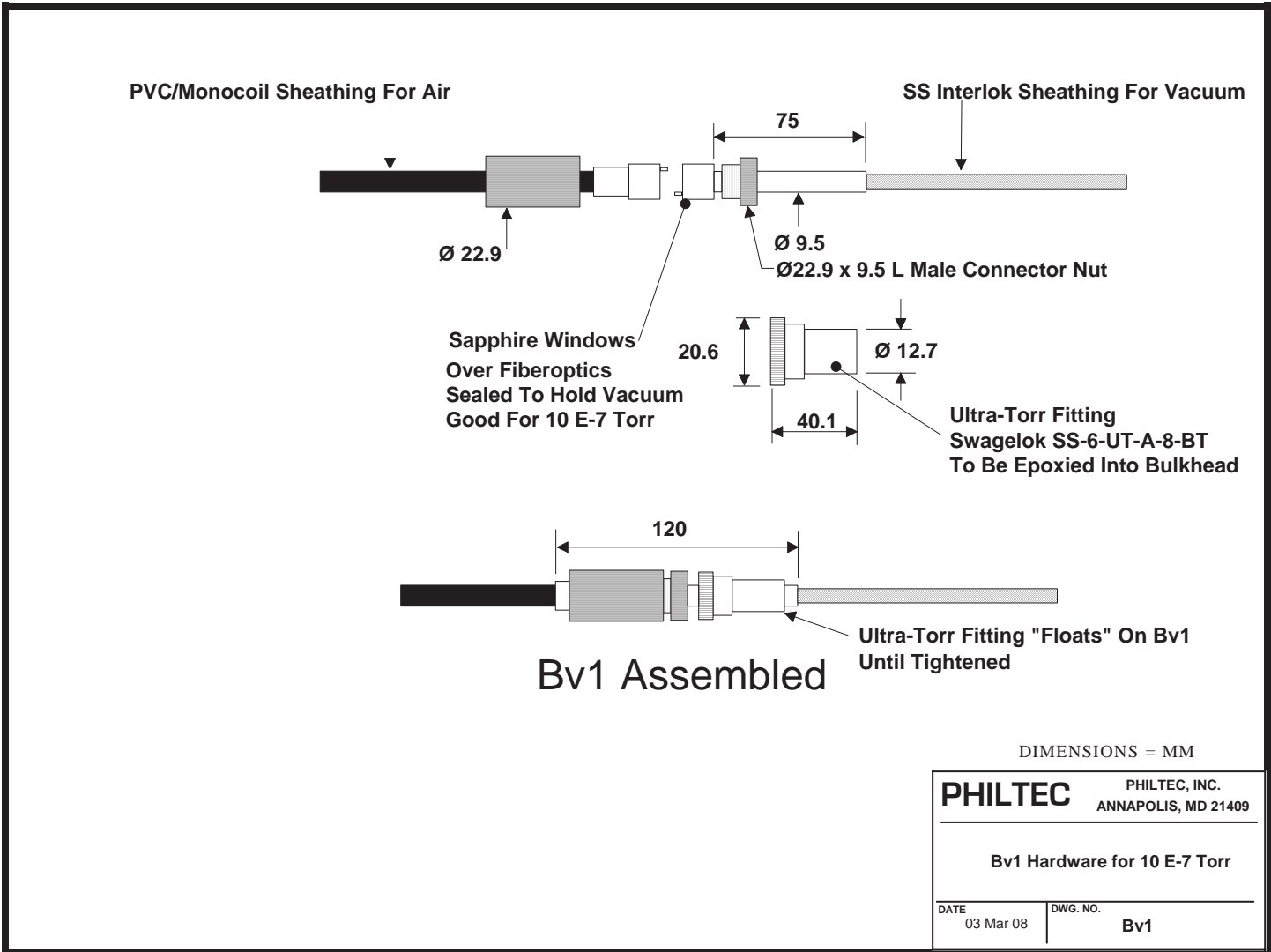
- Vacuum Range to 10^{-7} Torr
- Mounting by Swagelok Ultra-Torr Fitting
- Two Sapphire Windows at Connector Interface
- Works with most Philtec D and RC Model Sensors*

* not available for models D6, D12 and RC12

PHILTEC

www.philtec.com

Fiberoptic Sensors for the Measurement of Distance, Displacement and Vibration



Description

Option Bv1 provides a connectorized sensor cable with:

- Window sealed fiberoptics for operation in a vacuum chamber
- Swagelok Ultra-Torr fitting

Operating Principle

Philtec's fiberoptic sensors are comprised of many fibers. The smallest probes have dozens of fibers, the largest have several thousand. These fiber bundles can not be sealed to hold high vacuum.



In the Bv1 vacuum passthru, the sensor's transmitting and receiving light guides are separated at a connector interface. This eliminates all crosstalk between channels, thereby allowing the sensor light signals to be accurately transferred from air to vacuum environments. Sapphire windows are epoxied into the connector end on the vacuum side, sealing the fiberoptics in the vacuum.